

## Spiritual Care

The chaplains are responsible for the spiritual care of patients, relatives and staff and we are privileged to have Rev. Chris Beard and Rev. Brenda Waters as part of our team.

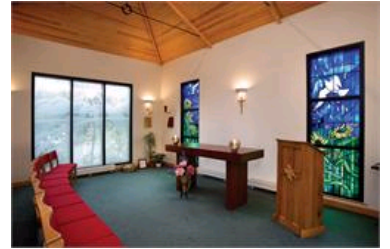





The Hospice has a holistic approach to patient care – taking people as a whole and addressing the needs of the mind, body and soul. Emotional support may sometimes involve simply listening. Patients talk about their lives, their regrets, their triumphs and joys, their concern for their family and their anger and sadness.


Support for family members is also important - patients cope better if they know their family is being looked after. This in turn gives family members the strength to look after their loved ones more effectively. The work of the chaplains can involve sharing some of the very deepest and peaceful moments within human experience.


Chris has arranged for baptisms and blessings to take place in the Hospice and Brenda and he are often asked to take funeral services. The annual Light Up a Life carol service in Chichester Cathedral gives friends and relatives an opportunity to reflect and remember loved ones, and to celebrate their lives.

The Hospice chapel was opened in 2003, together with a quiet room and chaplains' office, providing a focus for worship as well as somewhere secluded to rest, think or simply be. There is ample provision of space for the display of books of remembrance, a book of benefactors, a simple book for folk to write down their thoughts and reflections, as well as tracts, and helpful multi-faith books and aids. There is a short prayer service at 12 noon on Monday and 12.30 pm on Tuesday and Friday.



-  [Take our tour](#)
- **DONATE**
-  [Members area](#)
-  [Find us on Facebook](#)

 The Fundraising Standards Board

 The Sunday Times 100 Best Not-for-profit Organisations to Work For 2012

Built on [Cubik](#)

©2012 St Wilfrid's Hospice Chichester. Registered in England and Wales. Charity number: 281963. Tel: 01243 775 302